



The Iqalukpik Fish Plant (Arctic Char)
Commercial Fishery

Est. 1985

The Iqalukpik Fish Plant

The Iqalukpik Fish Plant artic char commercial fishery program est.1985 to develop socio-economic development and employments with local fisherman in Chesterfield Inlet. The Fish Plant established a fishery to create employment and training for a small inshore commercial fishery program to sustain programs and services.

The Iqalukpik Fish Plant
P.O. Box 10
Chesterfield Inlet, Nunavut
X0C 0B0

Contact
Chesterfield Inlet Economic Development Officer

Tel (867) 898-4603
Fax (867) 898-9108

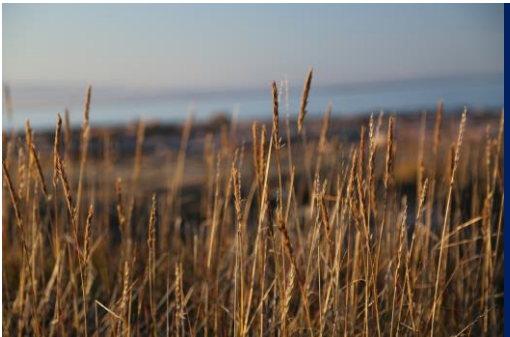
www.chesterfield-inlet.ca
edo_hamlet@qiniq.com



The Iqalukpik Fish Plant Commercial Fishery

Commercial Fishery Program

- The Iqalukpik Fish Plant commercial fishery program operates June to September in collaboration with local fishermen. The Fish Plant can process a small arctic char fishery to approx. 5,000 lbs. or 22,000 lbs. The local fishermen clean each freshly caught char before delivered to the plant and weighed for process.
- The Fish Plant process char clean whole dress before shipped to another market fishery plant of the Kivalliq Arctic Foods. The Plant creates employment of three fish plant operators that process and prepare fish to ensure each char is clean-wash and whole dress, weighed, frozen, and pack to approx. 50 to 60 lbs. before ship to another market distributor of the Kivalliq Arctic Foods. The Plant operates seven days/ week summer to fall during commercial fishery season.



The Iqalukpik Fish Plant commercial fishery locally own and operated in Chesterfield Inlet!

Inshore Fishery Program

The Fish Plant provides services to sustain and manage traditional fishery or balance commercial fishery of fresh arctic char to create employment, or training. The Plant is locally owned licensed that manages, and process fresh char in partnership of local fishermen that process at the fish plant to market to another licensed distributor of the Kivalliq Arctic Foods.

The commercial fishermen obtained commercial fishing license under the Department of Environment for commercial fishing of the Iqalukpik Fish Plant that process freshly harvested arctic char under the regulations of the Department of Environment. The Plant purchased freshly caught arctic char from local fishermen at \$3.50/ lbs., clean whole dress, and weight.



The Iqalukpik Fish Plant!

'To develop inshore fishery, & infrastructure with local fishermen to access market, or partnership of local commercial fishery programs, & services.'

- Fishery Programs & Services!

'Develop small commercial fishery program to create employment, training, or services to commercial fishermen.'

Fish Plant Services

- Commercial fishery service
- Fresh arctic char fishery market
- Sustained socio-economic development, employment, or small inshore fishery by harvesting traditional fishery.

The Arctic Char Fishery Services

- Harvest small commercial fishery with local commercial fisherman.
- Provide services, market, training/ test fishery, or char fishery & fish safety/ intern freshwater bio-test fishery program services